

# Annual



# Report

# 2025



# Content

04

## About GreenManjaro

Mission & Vision  
Who We Are  
Where We Work

05

## Our Approach

Climate Care by Kids  
Our 4 Pillars  
Main Operational  
Partners in Tanzania

06

## Our Impact

Impact Overview

07

## Projects & Activities

Our 4 Pillars  
Special Projects  
& Events

14

## Partnership & Sponsorship

Local Partners  
Main Festival Partner  
International Partners

16

## Governance & Transparency

Transparency &  
Governance  
Organisational  
Structure

17

## Financial Overview

Mission Growth  
Income vs Expenses  
How we invest our  
funds

18

## Looking Ahead

Kili Climate Days  
Green Corridor Project  
Kili Green  
Empowerment

# Letter from the team



Dear friends and supporters of Greenmanjaro,

2025 reminded us why our mission matters. It was a year defined by partnership and a shared commitment to lasting change that starts with children. We are delighted to report that Greenmanjaro's journey continues to grow, innovate, and deliver tangible environmental impact across the Kilimanjaro region.

Together with our partners, volunteers, and sponsors, we strengthened our mission to empower young people through our Kili Lighthouse Educational Programme by launching our student book, *The Future Is in Our Hands*. Across schools and communities, we are inspiring kids through education, hope and hands-on activities that can turn ideas into action and dust into green.

The year began with a landmark milestone: the opening of the Kili Green Hub in Moshi, a central space where learning, collaboration and exchange now thrive. It has become an invaluable meeting place for Roots & Shoots volunteers, local schools and international visitors, and a catalyst for new programmes, skills training and youth empowerment. From distributing extracurricular books to tabletop plastic-recycling machines, tree planting and veggie gardens, we continued to translate environmental awareness into hands-on learning.

Another highlight of 2025 was the Kili Kids Climate Festival, where we amplified the voices of 1500 young Kili Heroes. The creativity and enthusiasm from the Kili Kids reaffirmed why education is at the heart of our mission. Building on this success, in 2026, we will expand the concept through Kili Climate Days, enabling us to reach new regions, including the Serengeti, and engage even more schools and communities.

Equally important was strengthening our partnerships. In 2025, Greenmanjaro welcomed new sponsors, strategic partners and creative collaborators, while maintaining our long-standing partnerships with the Jane Goodall Institute and FTK.

Environmental impact remains the core of everything we do. In 2025, at least 44,000 tree seedlings were planted and nurtured, alongside the development of veggie gardens and the introduction of tabletop plastic recycling machines, continuing work towards sustainable school environments. These projects are part of our broader vision: creating green corridors that connect education, nature and opportunity.

We want to extend our sincere thanks to everyone who made our year so successful: our supporters, donors, partners, volunteers and, above all, the children and young people who inspire us every day. Your belief in Greenmanjaro allows us to keep building, learning and growing together.

In 2025, we welcomed Kim Oostrom as a volunteer to our team.

As we look ahead to 2026 and beyond, we remain guided by optimism, responsibility and partnerships. The challenges facing our planet are real, but so is the determination of the next generation. With your continued support, we are confident that the future is indeed in their hands.

With heartfelt thanks,  
Marjolein, Penny, Ellen, Hans, Monique & Kim

# About Greenmanjaro



## VISION & MISSION

Our vision is to strive for a future where the iconic snow-capped peak of Mount Kilimanjaro still rises above the clouds. A powerful symbol of what we can achieve when we inspire the next generation with hope, knowledge, and the courage to act.

Our Mission is to empower the children of Kilimanjaro to adapt to climate change through education, hands-on climate-care projects, and community engagement. We equip children with the skills and know-how to protect nature, turning awareness into action, and action into lasting change.

We envision a world where young Kili heroes lead the way in climate resilience, where every child has a voice, a skill, and a story to create a greener, stronger tomorrow.

## WHO WE ARE

We are a team of six dedicated volunteers based in the Netherlands, united by a deep connection to Tanzania and a shared belief that today's children are tomorrow's future, the key to a greener future.

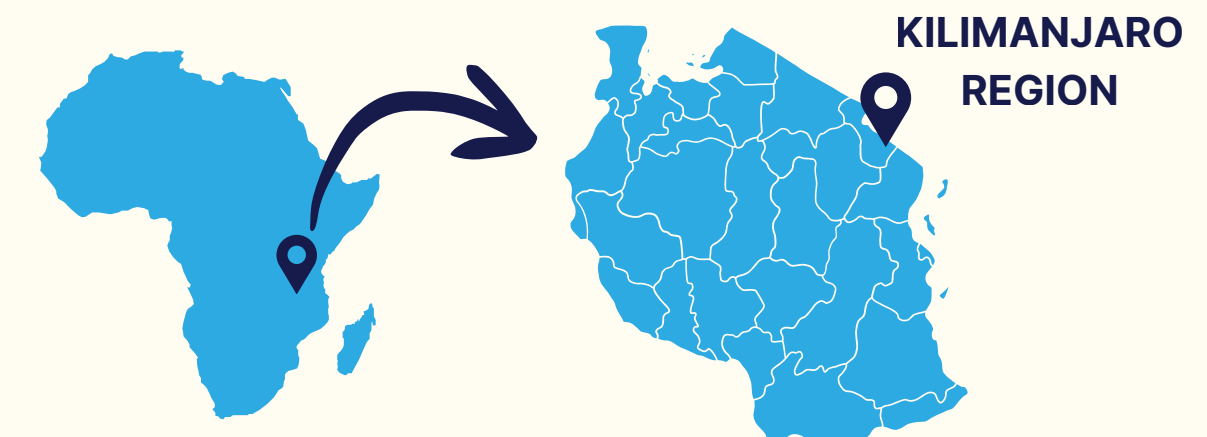
To create opportunities for children in Kilimanjaro, we equip them with the skills, knowledge, and confidence to adapt to climate change, building a sustainable future for their families and communities.

When you invest in a child, you invest in the future.

## WHERE WE WORK

Our project base is the northern region of Tanzania, at the foot of the iconic Mount Kilimanjaro, the symbol of climate change.

We work with schoolchildren of all ages in Moshi, Lower Moshi, Arusha, and the Hai District, partnering with local schools, authorities, and organisations to create lasting, grassroots impact.

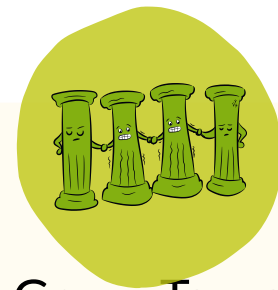


# Our Approach



## Climate Care by Kids

Empowering the next generation through local partners, guided by our four pillars that inspire **hope, action, and lasting impact.**



## Our 4 Pillars

Extracurricular Kili Lighthouse Educational Programme & Happy Green Tanzania  
Tree planting and nurturing  
Recycle Plastic Waste & clean-ups  
School Veggie Gardens



## Main Operational Partners in Tanzania

Our projects are made possible through strong local partnerships with the Jane Goodall Institute – Roots & Shoots programme and FTKilimanjaro. Together, we combine **global vision with local expertise**, empowering young people to take environmental action in their own communities and create meaningful, lasting change.



# Our Impact in 2025



Opening Kili  
Green Hub  
3200+ visitors



Kili Climate  
Festival 2025 -  
1500 students



Partnered with  
10 new local  
partners during  
the festival



Shared 2500+  
students books  
across 40+  
schools



9 clean up days  
& table-top  
recycling  
machines  
delivered



Planted  
44,000+ trees

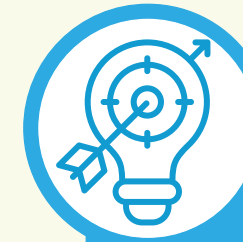


# Projects & Activities

## Extracurricular Kili Lighthouse Educational Programme “The Future is in Our Hands”

*The Future is in Our Hands* is a vibrant 80-page extracurricular book on adapting to climate change. After brainstorming with local school teachers and Roots & Shoots volunteers, we designed a resource for students aged 13–16, which is filled with real stories, local insights, and practical solutions. It encourages young people to take action on issues such as deforestation, waste, recycling, and nutrition, while inspiring them to improve the environment they live in and find a career.

First printed in 2024 and shared with the Roots & Shoots clubs, and the driving force behind our festival in 2025, where it was shared with 40+ schools. Currently being endorsed by the TIE (Tanzanian Ministry of Education.)



### STRATEGY

The book turns knowledge into action by featuring real young changemakers to show students that change is possible and that they have a role to play.



### EXECUTION

An accompanying Tips & Tricks guide for teachers helps schools achieve real impact in the classroom and beyond.  
2000+ student books shared to date.



### IMPACT

Distributed to 40+ schools across the Kilimanjaro region and during the Kili Kids Climate Festival. We have reached over 22,000 students, empowering a new generation to learn, act, and lead for a greener future.

# Projects & Activities

## Environmental Education for Primary School kids

### “Happy Green Tanzania”

Happy Green Tanzania is our environmental education programme for children aged 6 and above, in partnership with the Happy Green World Foundation, translated into Swahili and shared with schools since 2020.



## STRATEGY

We focus on teaching sustainable behaviour around waste, water, and energy through engaging, age-appropriate learning materials tailored to the Tanzanian context, translated into Swahili and endorsed by government authorities.



## EXECUTION

The programme includes a student book, activity guide, and two board games, delivered through Roots & Shoots clubs in schools in Northern Tanzania.



## IMPACT

Since 2025, over 1,000 books have been shared across approximately 50 schools, empowering almost 14,000 children with the knowledge and skills to care for their environment and drive lasting, sustainable change.

# Projects & Activities

## Tree planting and nurturing

Located beside the city of Moshi, Rau Forest is one of the few remaining urban forests in Africa and is home to the tree nursery. Once under pressure from deforestation driven by everyday household needs, the forest is now protected and steadily regenerating through our collective restoration efforts. Today, Rau Forest stands as a powerful example of environmental recovery, education, and community-driven climate action.



### STRATEGY

Together with our local partner Roots & Shoots, we focus on restoring biodiversity through large-scale tree planting and long-term nurturing, while also planting trees on school grounds to provide shade and fruit, and along bare riverbanks to prevent erosion.



### EXECUTION

The tree nursery in Rau Forest enables Roots & Shoots students to collect seeds, plant them and nurture the seedlings. Despite water scarcity due to reduced rainfall, they successfully cultivated and replanted 44,000 healthy seedlings across 14 species of shade, fruit, and medicinal trees. Replanting is supported by expert guidance and government backing.



### IMPACT

The programme is restoring biodiversity while building knowledge and ownership among local youth. The nursery has evolved into educational grounds, raising environmental awareness and equipping the next generation with the skills to protect and regenerate their natural environment.

# Projects & Activities

## Operation Clean-Ups & Recycling Plastic Waste

Through hands-on education and community action, we empower young people to tackle plastic pollution at its source. During large-scale clean-up events in Rau Forest and along local riverbanks, children actively collect, sort, and clean plastic waste before it is recycled in workshops.

Across three secondary schools, the plastic recycling hubs feature Dutch-designed, child-safe machines that allow students to shred, melt, and upcycle waste into practical household products. By turning pollution into opportunity, students gain environmental awareness, technical skills, and the confidence to act.



## STRATEGY

Plastic Waste is a pillar in our educational programme. Working with local partners and volunteers, we tackle plastic waste through education, clean-ups, and circular solutions.



## EXECUTION

Roots & Shoots volunteers organise regular large-scale clean-ups and process collected plastic in our school-based recycling workshops. Our newly designed portable tabletop recycling machines bring recycling education to more schools, spreading it to families and communities.



## IMPACT

Reduced pollution, practical skills for youth, inspiring kids to create tangible products from waste.

# Projects & Activities

## School Veggie Gardens

Within school grounds in Lower Moshi, our vegetable gardens give children the opportunity to learn how to plant, nurture, and harvest their own fresh produce. Through hands-on experience, students develop practical agricultural skills while gaining a deeper understanding of nutrition, sustainability, and land care.

The gardens also provide healthy vegetables that enhance school lunches, often the only meal many children receive each day. By combining education with food security, the project creates greener schools, healthier children, and stronger, more self-sustaining communities.



### STRATEGY

Create sustainable school vegetable gardens that combine environmental education with improved nutrition for children.



### EXECUTION

Students actively plant, water, maintain, and harvest vegetables within their school grounds under the guidance of local teams and volunteers.



### IMPACT

The gardens provide fresh produce for school lunches, strengthen food security, and teach children lifelong skills in sustainability and self-reliance.

# 2025 Special Projects & Events



## THE KILI GREEN HUB

The Kili Green Hub at the edge of Rau Forest in Moshi has been transformed from a derelict building into a vibrant education centre, officially opened in January 2025. It now serves as a unique base for Roots & Shoots volunteers. The hub welcomes both local and international students to experience our projects and four pillars in action. It has quickly become an essential space for learning, collaboration, and inspiration. An unmissable asset to our mission.

BEFORE



AFTER



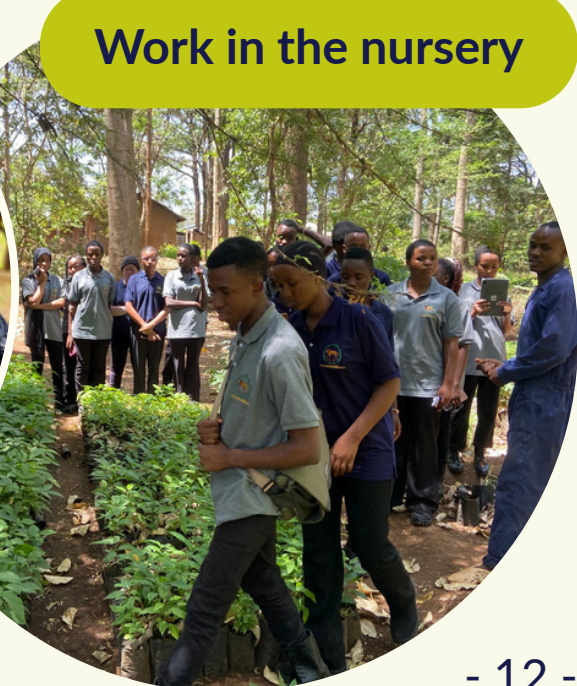
KGH team of volunteers



New furniture, designed and built for the hub with the help of Nacho&Kim, international volunteers



Work in the nursery



# 2025 Special Projects & Events



## KILI KIDS FOR CLIMATE FESTIVAL

The Kili Climate Festival, held in May 2025 at USA River, brought together 1,500 students aged 13–16 for an inspiring, immersive and unforgettable experience. The festival showcased our educational programme, combined with hands-on workshops, an environmental documentary, sports, and dancing, to engage and empower young minds. This unique event opened new perspectives, created new partners and lasting memories. The remarkable impact still ripples through the Kilimanjaro region, and would not have been possible without the valued support of our main partners, Stichting Pharus, and local partners Roots & Shoots, FTKilimanjaro, and Afrisos.

# Local Partners & Main Festival Partner



Our trusted partnership with the **Jane Goodall Institute's Roots & Shoots programme** is key to our impact. Rooted in a mission to empower young people to care for people, animals, and the environment, our dedicated volunteers deliver our climate care educational projects to school-based Roots & Shoots clubs, inspiring youth to take meaningful action.



Our valued partnership with **FT Kilimanjaro**, based in Lower Moshi, supports sustainable, community-driven development across the region. Together, we enable large-scale tree planting on the sandy plains, create school veggie gardens and provide shade through tree planting in school grounds. Our educational programme empowers communities and young people to thrive and care for their environment.



Our new festival partnership with **Afrisos, African Filmmakers**, brings powerful storytelling to our programme. They inspire and educate young audiences through impactful environmental films, strengthening awareness and engagement around climate action.

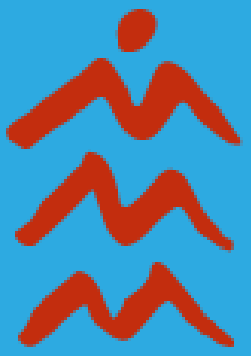


Our partnership with **Stichting Pharos** made our festival a reality. Inspired by the symbol of a lighthouse, bringing light, guidance, and hope where it is most needed, Pharos commits to supporting those in need. Their generosity and vision enabled us to bring our Educational Lighthouse Programme to life and reach 40+ schools and communities with meaningful impact.

# Invaluable International Partnerships

## From Tanzania to the Netherlands

Without the support of our partners, family, and friends, the Greenmanjaro Climate Care projects would not be possible. Their trust, commitment, and generosity are the foundation of everything we do, helping us turn ideas into meaningful on-the-ground impact.



# Governance & Transparency



## Organisational Structure

*“If you want to go fast, go alone. If you want to go far, go together.”*

### African Proverb

Greenmanjaro is a Dutch ANBI-registered charity built on **long-term collaboration, local trust, and shared responsibility**. Together with dedicated Tanzanian NGOs, teachers, volunteers, and communities, we create practical climate solutions that directly improve the lives of children living around Mount Kilimanjaro. From tree nurseries and school gardens to plastic recycling workshops, environmental education and a flagship hub, we design every project to create lasting local ownership and measurable impact.

Our work combines **grassroots action with professional accountability**. We operate with transparent reporting structures, uphold international human rights standards, and partner with organisations that share our commitment to integrity, child safety, and responsible governance. All personal data is managed in accordance with the EU GDPR.

Greenmanjaro is **driven entirely by purpose**. Board members receive no remuneration and finance their own travel expenses to and from Tanzania, allowing the maximum possible share of funding to reach the projects, schools, and young people at the heart of our mission.

We believe meaningful change happens when communities, partners, and children work side by side to build greener environments and stronger futures.

## Executive Board - NL

During 2025, board members were:

**Hans Korteweg**  
**Monique Vogelzang**  
**Marjolein Praaning**  
**Ellen de Roij, and**  
**Penny Vossen**

---

Delighted to welcome:  
**Kim Oostrom**  
to our midst in November

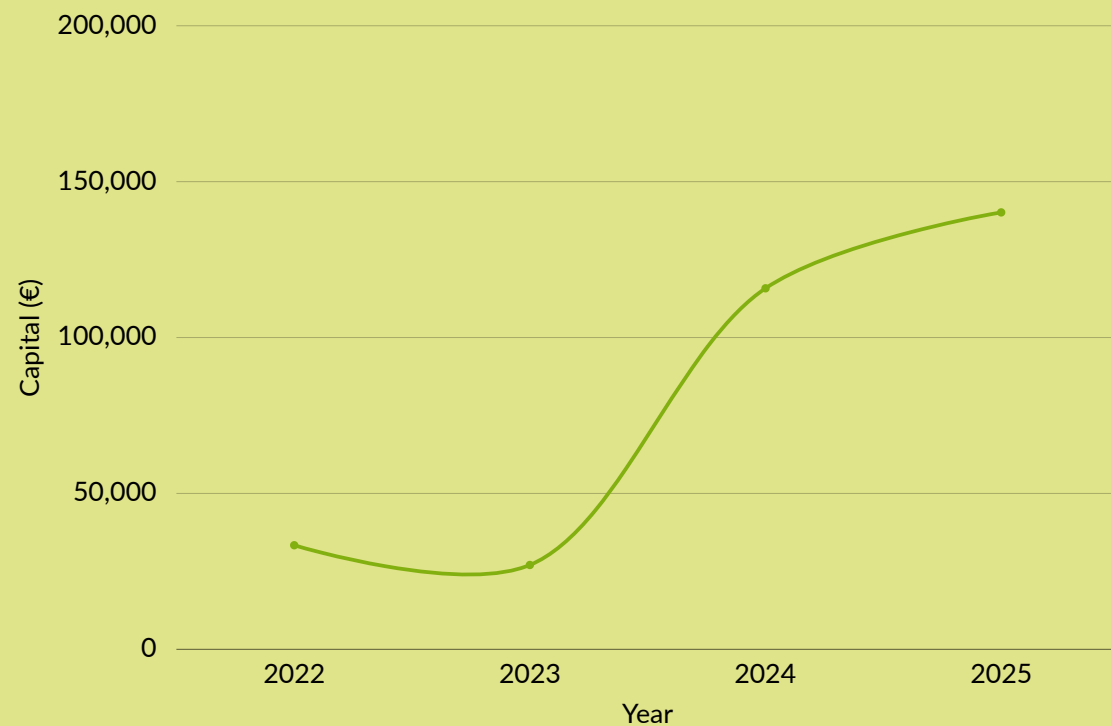
---

Our founding father,  
**Hans Korteweg**, stepped down  
as board member, but fortunately,  
he continues supporting Greenmanjaro  
as an Ambassador



# Financial Overview

## MISSION GROWTH



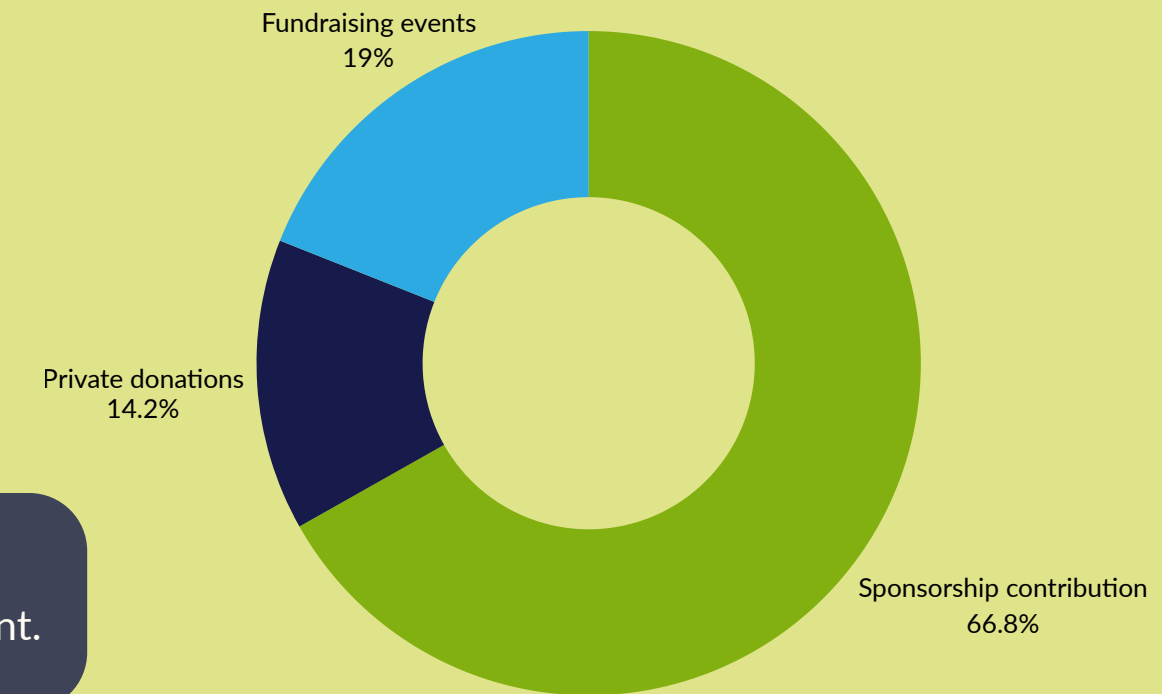
### MISSION GROWTH

+320% from 2022 to 2025  
From 33,380 € in 2022 to 140,138 € in 2025,  
our mission has grown more than fourfold.

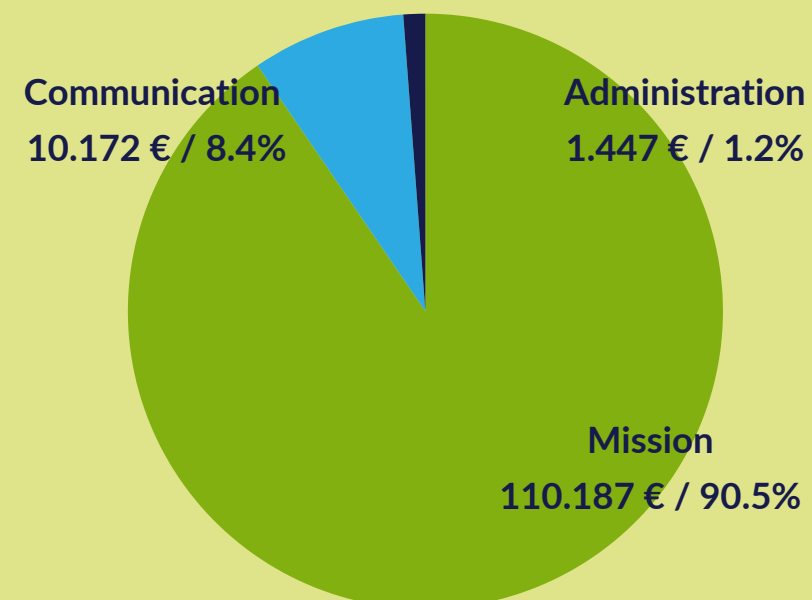
### INCOME IN 2025 BUILT ON PARTNERSHIP

Funding our mission together reflects shared commitment.

## INCOME



## HOW GM INVESTS ITS CAPITAL



### HOW GREENMANJARO INVESTS ITS CAPITAL IN 2025

90 % goes directly to the mission.

Marketing and communication costs were higher in 2025 due to the festival, but the materials created are now being reused across our ongoing projects, helping us extend our reach and impact.

# Together, We Made It Possible!

## Thank you!

2025 has been an **extraordinary year of action-packed growth and progress** made possible solely by the incredible support of our local partners, sponsors, family, and friends.

Highlights included our first-ever festival, which inspired 1,500 children with an unforgettable celebration of hope, creativity, and climate resilience, and the opening of the Kili Green Hub, which has become a magnet for both local and international youth.

We are equally thrilled to have closed the year by **securing funding for our Green Corridor School project** and to expand our impact in 2026 by bringing our festival programme directly into schools, with special thanks to Stitching Pharus.



# Looking Ahead...



## GREEN CORRIDOR PROJECT - LOWER MOSHI

Thanks to the incredible support generated during our October fundraising event in the Netherlands, we are proud to launch our first Green Corridor Project: *Turning Dust into Green* in 2026

This ambitious project will transform a secondary school into a green example of sustainability and climate resilience. By combining our four pillars with practical solutions, eco-cooking and solar energy, the school will become a flagship for environmental innovation in dry and barren areas.



## KILI CLIMATE DAYS

Building on the energy and success of our festival programme, we will **take climate education directly into schools across the Kilimanjaro Region** by launching Kili Climate Days 2026.

These dynamic and hands-on school events will inspire students through practical workshops focused on climate care, recycling, tree planting, food sustainability, and environmental responsibility.

Kili Climate Days will create lasting change beyond the classroom. Every child gains new knowledge, confidence, and inspiration to share with their family and community, creating a growing ripple effect of awareness and action throughout the region.



## KILI GREEN ENPOWERMENT

Working with local NGO partner, Unite for Africa Foundation, we will introduce personal skills training to our Kili Green Hub volunteers. The programme empowers young people with resilience, community-building skills and leadership.

# Connect with us



## Mail

[team@greenmanjaro.com](mailto:team@greenmanjaro.com)



## Website

[www.greenmanjaro.com](http://www.greenmanjaro.com)



## Address

Laan van Zeeman 22, 1851 SC Heiloo,  
The Netherlands



## 2025 FINANCE GREENMANJARO FOUNDATION

The annual accounts have been prepared based on the RJ 650 Fundraising organisations. This guideline is effective for fiscal years beginning on or after January 1, 2017.

**Accounting principles:** the valuation of assets and liabilities and the determination of the result are based on historical costs. Unless stated otherwise, assets and liabilities are stated at nominal value. Income and expenses are allocated to the year to which they relate.

**Reserves:** in accordance with the VFI guideline 'Reserves Charities', a distinction has been made within equity between reserves, special-purpose reserves and special-purpose funds.

The reserve is the freely disposable capital of the Foundation. Appropriated reserves are funds earmarked by the Board of Greenmanjaro for specific purposes. Appropriated funds are resources received from third parties to which a specific spending obligation is linked.

The VFI is the branch organisation of recognised charities in the Netherlands. The provisions of the VFI guideline "Reserves Charity" are in line with the relevant provisions as they appear from the RJ 650 Fundraising Organisations.

**Income and Expenses:** the income is determined based on (the pro rata part of) the year to which it relates. The Income of the Foundation consists of income from individuals, companies and other non-profit organisations.

**The Expenses** consist of the expenditure on the objective, and the costs attributable to this (such as travel and accommodation costs due to working visits to Tanzania), recruitment costs, management and administration costs and financial income and expenses.

**Taxes:** under Article 24 of the Inheritance Act and the Corporate Income Tax Exemption Decree, the Foundation is exempt from inheritance and gift duties and corporate and turnover tax, respectively.

**Financial and investment policy:** any reserves of the Greenmanjaro Foundation are held in the form of freely withdrawable deposits and regular savings accounts. The policy is emphatic not to tie up the financial reserves for a longer term or to invest in illiquid or higher-risk investment categories.

**Income & Expenditure:** income increased by 21%, from EUR 115.792 (2024) to EUR 140.138.

Ledger	2025		2024	
	Income (Eu)	Expenditure (Eu)	Income (Eu)	Expenditure (Eu)
Government grants	€ -		€ -	
Other non-profit organizations	€ -		€ -	
Other	€ -		€ -	
<b>Profits from grants</b>	<b>€ -</b>		<b>€ -</b>	
<b>Sponsorship contributions</b>	<b>€ 93.642,00</b>		<b>€ 71.789,00</b>	
Gifts and donations from individuals	€ 46.496,00		€ 44.003,00	
Bequests	€ -		€ -	
Lottery organizations	€ -		€ -	
Other	€ -		€ -	
<b>Donations</b>	<b>€ 46.496,00</b>		<b>€ 44.003,00</b>	
Consideration for goods/services	€ -		€ -	
Financial income	€ -		€ -	
Other	€ -		€ -	
<b>Total income</b>	<b>€ 140.138,00</b>		<b>€ 115.792,00</b>	
Cost of services delivered		€ 59.195,00		€ 52.501,00
Communication costs <sup>1</sup>		€ 10.172,00		€ 3.176,00
Financial costs <sup>2</sup>		€ 1.477,00		€ 346,00
Other <sup>3</sup>		€ 50.992,00		€ 39.048,00
<b>Total expenditure</b>		<b>€ 121.836,00</b>		<b>€ 95.071,00</b>
<b>BALANCE</b>		<b>€ 18.302,00</b>		<b>€ 20.721,00</b>
<sup>1</sup> Communication costs 2025 are relatively high due to website updates, development of various campaigns and communication material in the Netherlands and Tanzania. Costs include the setup expenses for a festival in May and the promotional expenses for a fundraising in November. The costs of printing schoolbooks are not included.				
<sup>2</sup> Financial costs also include substantial expenses related to bank transfers to Tanzania, as well as transfer costs of MoU's with (local) partners.				
<sup>3</sup> Fully dedicated to projects and MoU's				

## Balance

	31-12-2025	31-12-2024	31-12-2023
Current assets	€ 3.660,00		
LT Loan	€ 2.500,00	€ 2.500,00	
Liquid assets General	€ (6.436,00)	€ (2.002,10)	€ 3.521,52
Liquid Assets Special Campaign	€ 42.370,00	€ 26.649,24	
Liquid assets Plastic	€ 37.157,00	€ 20.744,49	€ 20.562,43
Liquid Assets Trees		€ 7.016,75	€ 10.103,24
<b>Total Assets</b>	<b>€ 79.251,00</b>	<b>€ 52.408,38</b>	<b>€ 34.187,19</b>
Reserves & Funds	€ 30.721,00		
Destination Reserve	€ 42.370,00	€ 52.408,38	€ 34.187,19
Provisions	€ 6.160,00		
Short term debts			
Amount still to be paid			
<b>Equity &amp; Liabilities</b>	<b>€ 79.251,00</b>	<b>€ 52.408,38</b>	<b>€ 34.187,19</b>

2025 banking cash difference: EUR 276,-

## Elaborating on Financial Data

Liquid assets: freely absorbable.

Explanation of the various items in the Statement of Income and Expenditure:

This year, a profit of **EUR 18,302** is realised. This is ca 11.7% lower compared to the previous year.

The costs for marketing and communication being 8.4% of the generated income, were higher compared to 2024: EUR 10,172 compared to EUR 3.176,60, due to the festival. However, the materials created will be reused across the ongoing projects in 2026.

The travel and accommodation costs of the board to Tanzania (11 trips with a total amount of approximately EUR 33,000) have been incurred at the own expense of board members and could be seen as independent donations.

Costs overhead: bank costs and accounting and administration spent in the Netherlands represented a mere **0,6 %** of total cost.

Equity & profit appropriation: The balance of Income and Expenses is added annually to the reserves. Of this, the part to which a specific destination obligation has been linked by third parties is added to the Designated Fund.

The Board, by the Foundation's statutory objectives, allocates as a destination reserve any specific spending which was not used by third parties.

# Standaardformulier publicatieplicht ANBI Algemeen

## 1 Algemene gegevens instelling

Naam

Nummer Kamer  
van Koophandel (\*)

**Contactgegevens.** Vul minimaal 1 van de velden Adres, Telefoonnummer of E-mailadres in.

Adres

Telefoonnummer

E-mailadres

Website (\*)

RSIN (\*\*)

Actief in sector (\*)

In welke landen is  
uw instelling actief? (\*)

Aantal medewerkers (\*)

Betaalde personeelsleden in gemiddeld aantal fte gedurende het boekjaar.

Aantal vrijwilligers (\*)

Vrijwilligers die zich regelmatig (meer dan 3 keer per jaar) inzetten voor uw instelling.

### Statutair bestuur van de instelling

Naam bestuurslid

Functie bestuurslid



Overige informatie  
bestuur (\*)

Doelgroepen (\*)  
(meerdere opties mogelijk)

Algemeen publiek  
 Alleenstaande ouders  
 Analfabeten  
 Chronisch zieken  
 Dak- en thuislozen  
 Dieren  
 Gedetineerden  
 Gelovigen  
 Gemeenschappen  
 Jongeren

Kinderen  
 Lhbtqi+  
 Mensen met een beperking  
 Milieu  
 Minderheden  
 Minima  
 Natuurgebieden  
 Oceanen en zeeën  
 Ouderen  
 Patiënten

Slachtoffers van geweld  
 Slachtoffers van natuurrampen  
 Slachtoffers van oorlog  
 Slachtoffers van seksueel misbruik  
 Studenten  
 Verslaafden  
 Vluchtelingen  
 Vrouwen en meisjes  
 Werklozen  
 Wildlife  
 Overig

(\*) Optioneel veld, niet verplicht    (\*\*) Verplicht veld, ook voor buiten Nederland gevestigde instellingen







**Baten**

Subsidies van overheden

€

€

Subsidies van andere instellingen zonder winststreven

€

€

Overige subsidies

€

+

€

+

**Baten van subsidies**

€

€

Baten sponsorbijdragen

€

€

Giften en donaties van particulieren

€

€

Nalatenschappen

€

€

Bijdragen van loterijinstellingen

€

€

Overige giften

€

+

€

+

**Giften**

€

€

Baten als tegenprestatie voor levering van producten en/of diensten (omzet)

€

€

Financiële baten

€

€

Overige baten

€

€

+

+

**Som van alle baten**

€

€

**Lasten**

Inkoopwaarde van geleverde producten (kostprijs)

€

€

Verstrekke subsidies &amp; giften

€

€

Aankopen en verwervingen

€

€

Communicatiekosten

€

€

Personeelskosten

€

€

Huisvestingskosten

€

€

Afschrijvingen

€

€

Financiële lasten

€

€

Overige lasten

€

+

€

+

**Som van de lasten**

€

€

**Saldo van baten en lasten**

€

€

